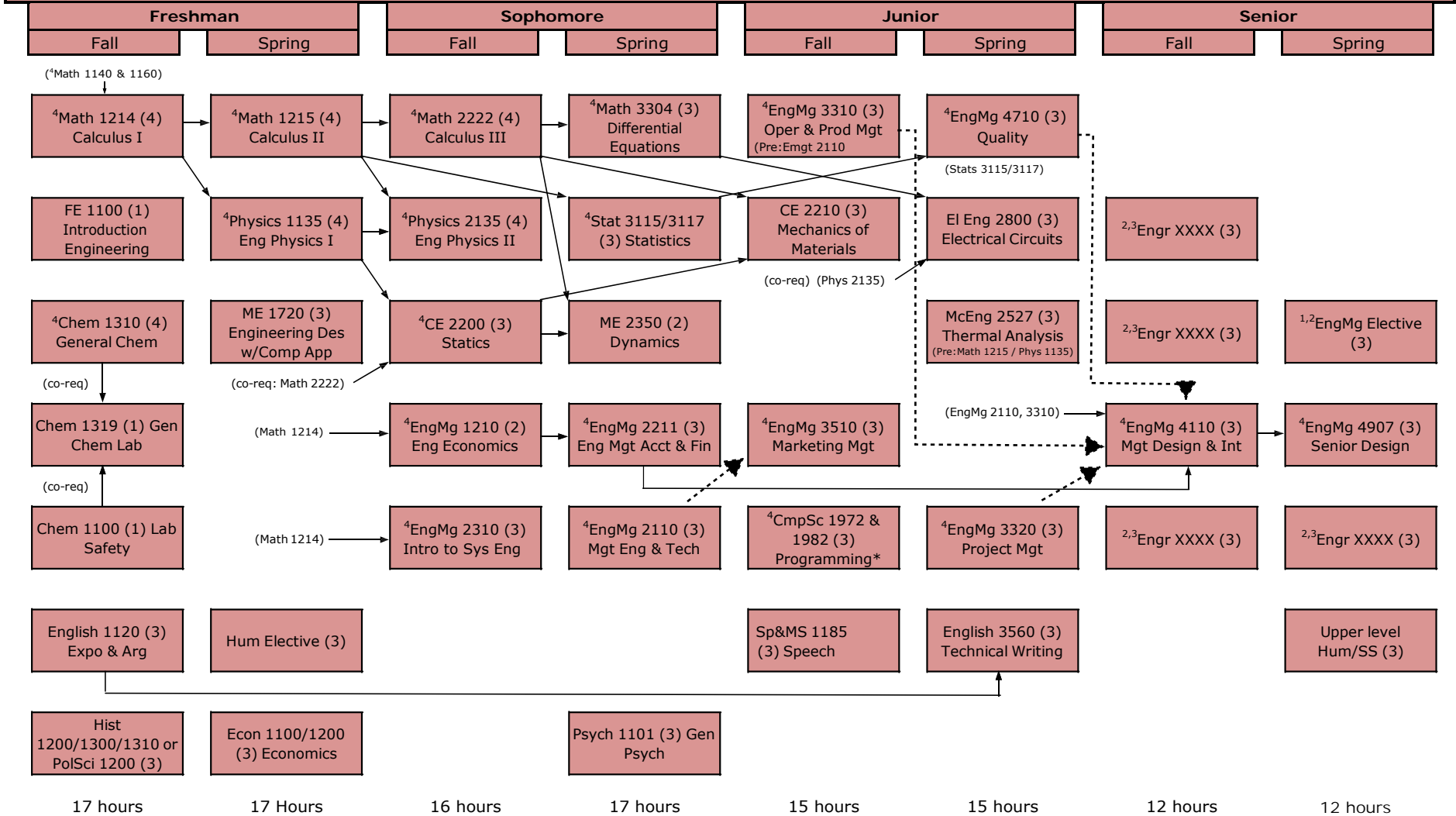


B.S. Engineering Management, General Engineering Option

Effective for students entering the Engineering Management Program FS2023 or later.



¹Eng Mg electives: Emgt 4XXX/5XXX, in consultation with your advisor

²Composite GPA for these six courses must be 2.x or better.

³15 hours of Engineering courses from a single outside department (e.g., Mechanical, Civil, Mining, etc.) are to be chosen in consultation with your advisor.

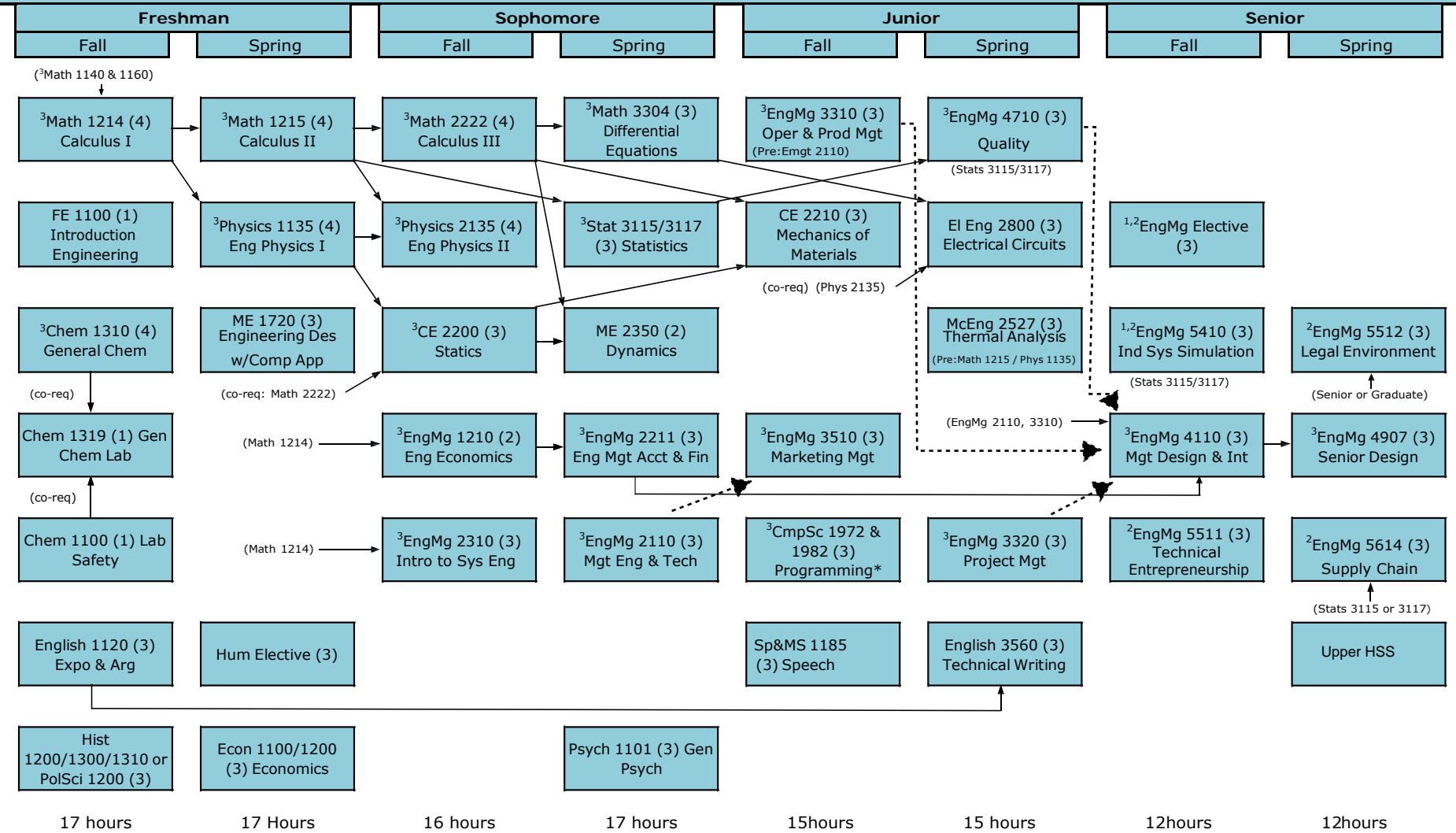
⁴Course must be completed with a grade of "C" or better

*Computer Science 1971/1981, 1570/1580 also fulfills requirement.

-----▶ Preceded or Accompanied by

B.S. Engineering Management, Management of Technology Emphasis

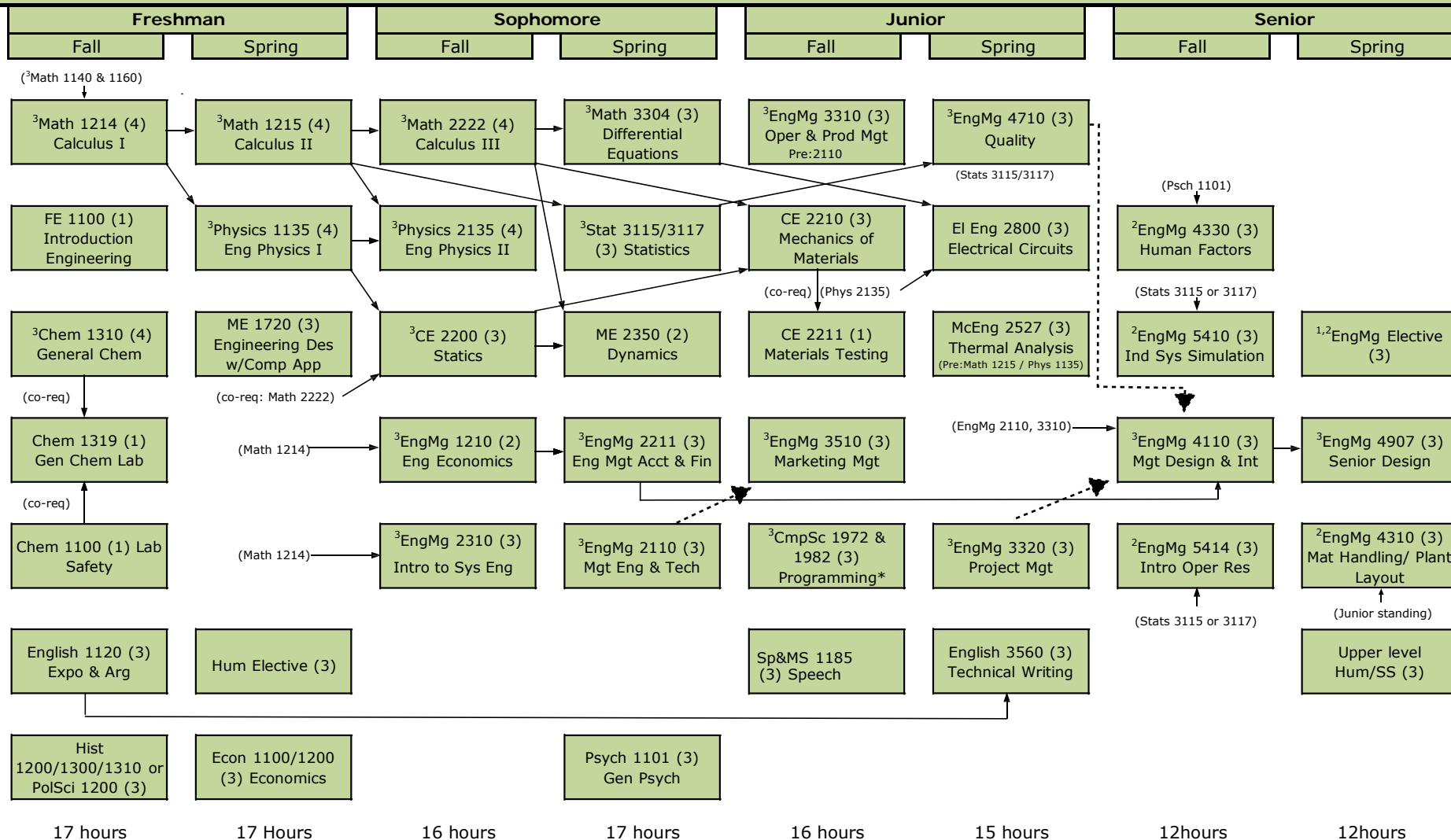
Effective for students entering the Engineering Management Program FS2023 or later.



¹Eng Mg electives must be in consultation with your advisor.
²Composite GPA for these six courses must be 2.x or better.
³Course must be completed with a grade of "C" or better
 *Computer Science 1971/1981, 1570/1580 also fulfills requirement.
 -----> Preceded or Accompanied by

B.S. Engineering Management, Industrial Engineering Emphasis

Effective for students entering the Engineering Management Program FS2023 or later.



¹Eng Mg electives must be in consultation with your advisor. ²Composite GPA for these six courses must be 2.x or better. ³Course must be completed with a grade of "C" or better

*Computer Science 1971/1981, 1570,1580 also fulfills requirement.

-----> Preceded or Accompanied by